



ISLAMIC ASSOCIATION
OF NORTH LONDON

MASJID REDEVELOPMENT PROJECT

EMPOWERING TOMORROW BY BUILDING TODAY

UK Registered Charity - 1173839

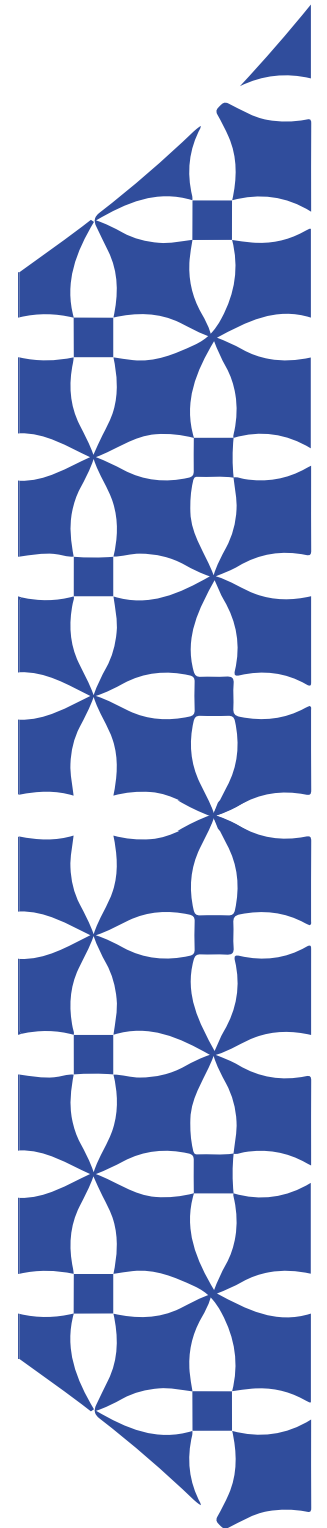
IANL - Islamic Association of North London

683-685 High Road, London, N12 0DA

info@ianl.org.uk

CONTENTS

Vision - Executive Summary	01 - 02
IANL Timeline & Impact	03 - 06
Need for Redevelopment & Vision for Iconic New Centre	07- 09
Masjid Redevelopment	10 - 11
Progress & Phasing the Redevelopment	12 - 14
Finance	15 - 16
The Community Support / Barakah Through Collaboration	17 - 18
Ways to Donate	19



EXECUTIVE SUMMARY

Founded in 1977, the Islamic Association of North London (IANL) has been a cornerstone of the Muslim community in North London. Our current centre, built in the 1990s, was designed for a smaller community.

With Barnet's Muslim population now at 55,000 and projected to grow significantly, our facilities are increasingly strained to meet the diverse and expanding needs of our members. Representing over 65 different nationalities, our community is rich and multicultural.

This redevelopment project is central to IANL's long-term vision of creating a centre of excellence. Our goal is to provide comprehensive education, inspiration, spiritual guidance, and social and charitable services for decades to come.

IANL VISION

EDUCATIONAL

Deliver comprehensive Islamic education for all ages nurturing spiritual growth and a solid foundation in Islamic knowledge.



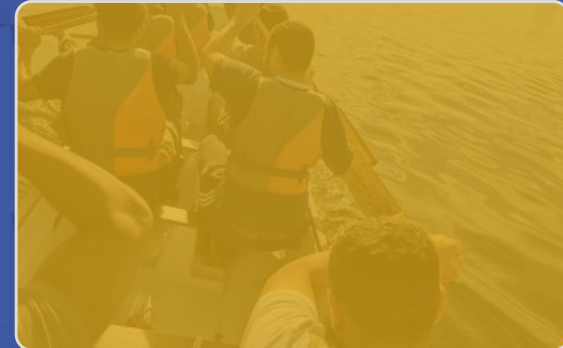
EXPANSION

To expand our facilities to meet the needs of the increasing Muslim population in Barnet.



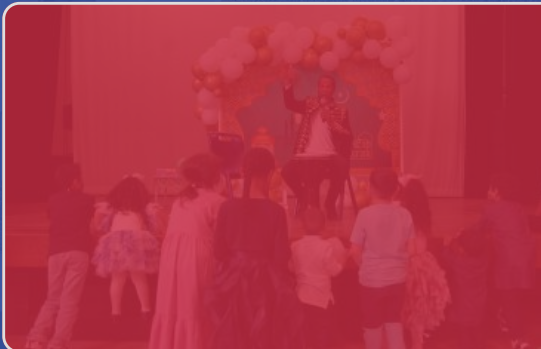
COMMUNITY HUB

To be a welcoming local community hub where people can use our services and learn about Islam.



OUTREACH

To establish strong relationships with other Muslim Institutions in North London.



SELF-SUFFICIENT

Charity that integrates economic, environmental and social aspects to meet current needs without compromising future generations ability to meet their own needs.



IANL FORMED

The Islamic Association Of North London was formed as a charity.

1989



LAND PURCHASE & CONSTRUCTION

IANL purchased the current Mosque site in 1992. Fundraising, planning and construction took a number of years and the Mosque officially opened in 1997.

2008



PHASE 1 EXTENSION COMPLETED

With creative fundraising campaigns and several years of effort, extension phase 1 was completed. The extra capacity and new dedicated sisters' area enabled the expansion of IANL services.

2019



PHASE 3 LONG-TERM EXPANSION

Assets acquisition efforts are ongoing with a vision for long-term expansion.

1973

1ST MASJID (PROPERTY PURCHASED)

IANL purchased a house, and established the first Mosque for the local residents.



1992

PHASE 1 EXTENSION STARTED

Extension phase 1 started with the goal to obtain planning permission for extra capacity with a new dedicated sister's area, an enlarged main hall, and new ablution areas.



2012

PHASE 2 REDEVELOPMENT PLANNING APPROVED

This redevelopment project is a key initiative to meet the increasing demand and to cater for the growing needs of the community for future generations - insha'Allah.



2022+

IANL IMPACT

Since its establishment, IANL has been at the heart of the Muslim community, offering religious, social, recreational, and educational facilities since its establishment. Over the years, it has expanded its services to support the spiritual, emotional, and physical development of our community, touching every aspect of a Muslim's life.

HERE'S HOW WE'VE MADE AN IMPACT:

Religious Services

Many thousands of worshipers benefit from the mosques services on a weekly basis with 2500+ people attending Friday prayers.

- 3 Friday Prayers/Jamaat
- 5 Daily Prayers
- Ramadan & Eid Services
- Eid in the Park
- Nikah
- Imam Q&A
- Umrah

Educational Impact

Knowledge is empowerment. At IANL, we provide Islamic education, nurturing spiritual growth with a strong foundation in Islamic knowledge for all ages.

- Ilm Programme
- Weekend Islamic School
- Weekday Madrassa
- Sisters Only Classes
- Hifz Programme
- Arabic Language Programme

Youth Programme

Our vibrant youth programs foster a sense of belonging and purpose. From sports to social events, we engage youth in positive activities.

- Boys Marital Arts
- Sisters Self Defence Classes
- Bothers Saturday Youth Club
- Young Muslim Islamic Courses
- Sisters Social Gatherings

Humanitarian & Social

- Ramadan Iftar provision.
- Sadaqa & Zakat al Fitr distribution.
- Support for other Masajid in London.
- Sadaqa, Zaktul Fitr distribution to international charities
- Homeless Support

Outreach Efforts

- Facilitated tour of the mosque from 23 different schools from the local area, with an immersive presentation on Islam and its main tenets.
- Participating in national Visit My Mosque event and outreach initiatives.
- Last year, our team conducted 50 interfaith dialogues, reaching over 1,000 participants

Welfare & Wellbeing

Beyond prayer, our services extend to community support and welfare, helping individuals through times of need.

- Helping the needy within the community
- Zakah - Local & National
- Financial aid
- Counselling Services
- Refugee Support
- Citizens Advice Bureau
- Matrimonial Service

THE PROJECT

NEED FOR REDEVELOPMENT

Current masjid, originally built in the 1990s, was designed to serve a smaller community with minimal provisions. However significant growth in Muslim populations in the decades since has resulted in following limitations.

Current Limitations

- **Full capacity Jummah:** Our Friday Jummah prayers currently hold three congregational prayers, but even that is sometimes not enough. Currently there are 3-4 jummahs.
- **Ramadan and Eid:** more demand than space available
- We have reached maximum capacity for the weekend and after school mudarris as they both have waiting lists due to capacity limitations.
- **Madrasah** - Both 'After school and Weekend madrasahs' are currently full and waiting lists due to lack of space.

Muslims living in the west face a multitude of modern challenges and through this project our goal is to empower the next generation with a strong Islamic identity.

1. **Expanding Capacity:** With the ongoing expansion project, we aspire to double the current capacity of 900 worshippers, welcoming people from over 65 different countries and growing.
2. **Holistic Services:** Beyond prayer, we envision a space that nurtures the whole person. From spiritual growth to emotional well-being, our offerings will extend to education, welfare, and youth empowerment.

VISION FOR AN ICONIC NEW CENTRE

At IANL, we envision more than just a Mosque. We see a vibrant community hub—a spiritual sanctuary, an educational beacon, and a community centre that unites all.

This redevelopment with an iconic building will be an Islamic landmark in North London. It will serve the Muslim community for decades, and enable us to meet the ever growing demand while advocating for interfaith harmony.

Increased capacity

- **Prayer Space:** More than double the current capacity for all

New Recreational areas

- Recreational Facilities
- Multi-function Hall
- Tea & Coffee Areas
- Social Spaces

Education Expansion

- Dedicated new classrooms
- Madrassah - larger capacity
- Islamic & Arabic Courses
- Supplementary Academic Programs
- Intensive Courses & Workshops

Expanded & Improved Services

- Hot Food Hub
- Financial Aid
- Activities for all
- Marriage Services
- School Tours & Visits
- Open Days
- Mother-toddler Playgroup
- Reverts Circle
- Community Outreach
- Youth Activities
- Ramadan & Eid programs
- Campaigns
- Islamic Counselling



BUILDING A LEGACY: WHAT THIS LOOKS LIKE

Let's build more than walls. Let's build bridges of understanding. Let's create a legacy that echoes through generations. Donate today and be part of our story—a story of faith, growth, and unwavering commitment. Worship/Religious Facilities Expansion:

Worship/Religious Facilities Expansion:

- **More than Double Prayer Capacity:** We're more than doubling the capacity for salah, Jummah, Ramadan, and Eid prayers.
- **Conference Hall and Offices:** A dedicated space for conferences and administrative offices.
- **Imam's Space:** Confidential discussions and guidance.
- **Community Zone:** Social space and multi-function community hall.
- **I'tikaf Space:** addressing increased demand for I'tikaf space, especially from our youth.

Community & Welfare

- Dedicated **community space** inclusive for all.
- **Counselling and Mental Health Clinics:** Supporting well-being.
- **Library and Café:** Learning and community.
- **Accessible Lift Access to All Floors.**

Youth

- **Safe Recreation Area:** A hub for martial arts, wrestling, and fitness.
- **Mentorship Programs:** Nurturing young minds.
- **Expanded Islamic Knowledge Classes.**

Sisters

- **Doubling Women's Facilities:** More space for sisters.
- **Mother & Toddler:** Increasing space for the over subscribed mothers and toddlers club.
- **Social and Office Space:** Offering comfort and functionality.

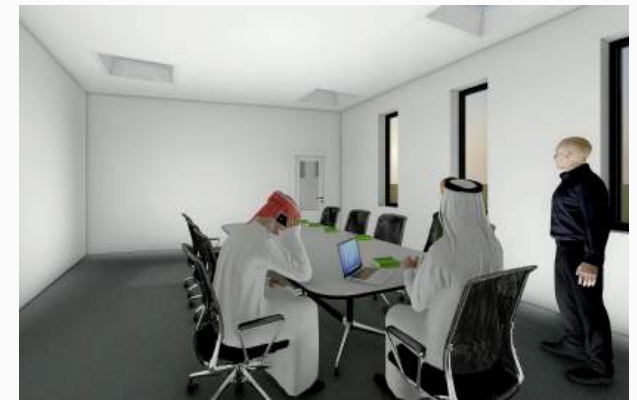
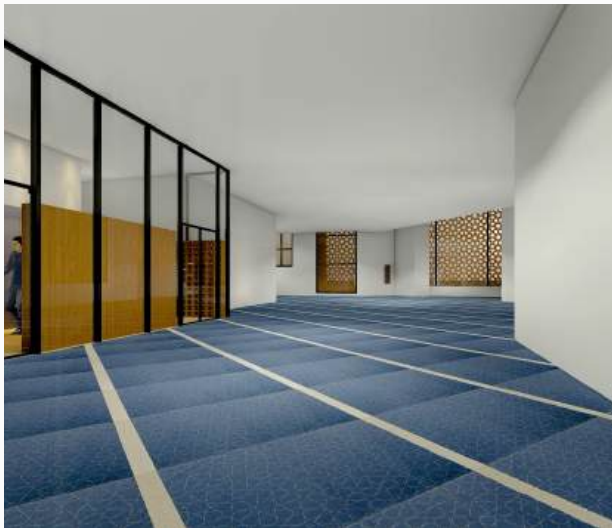
Dawah & Outreach Engagement

- Inter-Faith
- Elderly Support
- Homeless Shelters
- Food Banks
- Refugee Support

BUILDING AN ICONIC CENTRE

EMPOWERING TOMORROW BY BUILDING TODAY

Here are the illustrations for the development of this iconic Islamic Centre.





KEY PROJECT MILESTONES

01 Secured Planning Permission - 2019

After a number of years of planning, design and consultation, the planning permission was granted by the local authority.

02 Fundraising - 2019

Fundraising efforts was initiated with initial target to raise £2.5M.

03 Phase 1 & 2 Works: Foundation works

After robust tendering process an contractor was appointed in Q3 of 2022.
Phase 1 & 2 works were started and due for completion Oct 24.



04 Phase 3 - Watertight Structure

Steel frame structure to the new building from 1st floor to roof level. With addition of external fabric to the frame to make it a watertight shell.

05 Phase 4 & Phase 5: Internal development

Final 2 phases for all internal works for the whole building, with aim to complete all final finishing works.

BUILDING AN ICONIC CENTRE

Redevelopment of this iconic centre has been split into a number of phases to ensure the masjid remains usable during the build period and between phases.

This approach facilitates fundraising because work is only contracted when sufficient funds are in place. These phases are outlined below.

PHASES 1 & 2

GROUNDWORKS, FOUNDATIONS & FIRST FLOOR CONCRETE STRUCTURE

The works was started in October 2023
Scheduled to complete by September 2024 - inshaAllah

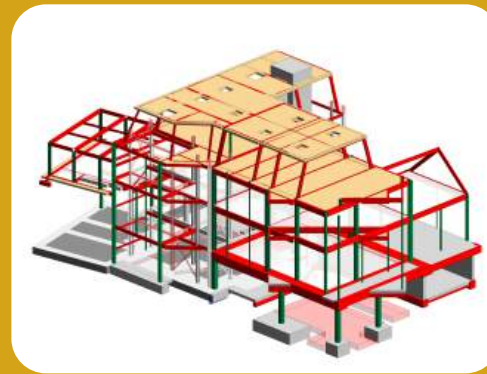
The total cost of the project (including all professional services) from initial design and planning to the end of phase 2 is expected to reach £1.1M.



PHASES 3

BUILDING THE FRONT ELEVATION TO ROOF LEVEL

Phase 3 represents a major part of this project in terms of scope and cost. This is where the new building structure begins to take shape and a significant milestone of a fully watertight structure. See illustration below:



PHASE 3 WORKS INCLUDES:

- Construction of steel frame structure to the new build from 1st floor to roof level.
- Addition of external fabric to the frame to make it a watertight shell.
- Construction of walls, roof, windows and doors.



PHASES 4 & 5

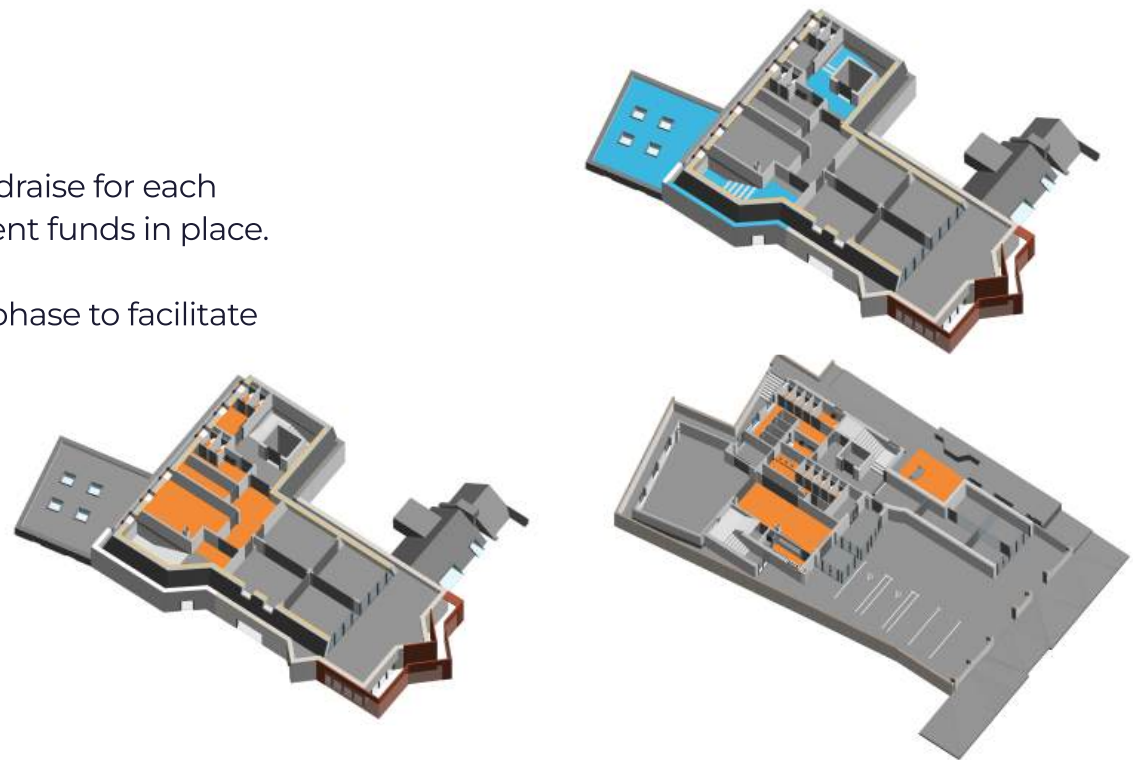
INTERNAL DEVELOPMENT

Splitting this big project in phases allows us to fundraise for each phase and commence work when we have sufficient funds in place.

Separate fundraising can be carried out for each phase to facilitate the works.

PHASE 4 WORKS INCLUDES:

- Works to existing building:
- New lift core and stairwell 1
- New stairwell 2
- Extra floor to rear of site including new roof



FINANCES

The total estimated cost of this project is £7.5M*.

By the grace of Allah SWT, with our fundraising efforts to date we have raised over £1.5M. This enabled us to budget and contract for phases 1 and 2 of the works, which is scheduled for completion in Q4 2024.

Total project cost breakdown:

Phase 1 & 2 cost:	Foundation and first floor	£1.1M
Phase 3 Cost est:	Watertight structure at the front	£1.5M*
Phase 4 Cost est:	Rear extension and lift	*£tbc
Phase 5 Cost est:	Internal development	*£tbc

HOW CAN YOU SUPPORT THIS NOBLE CAUSE?

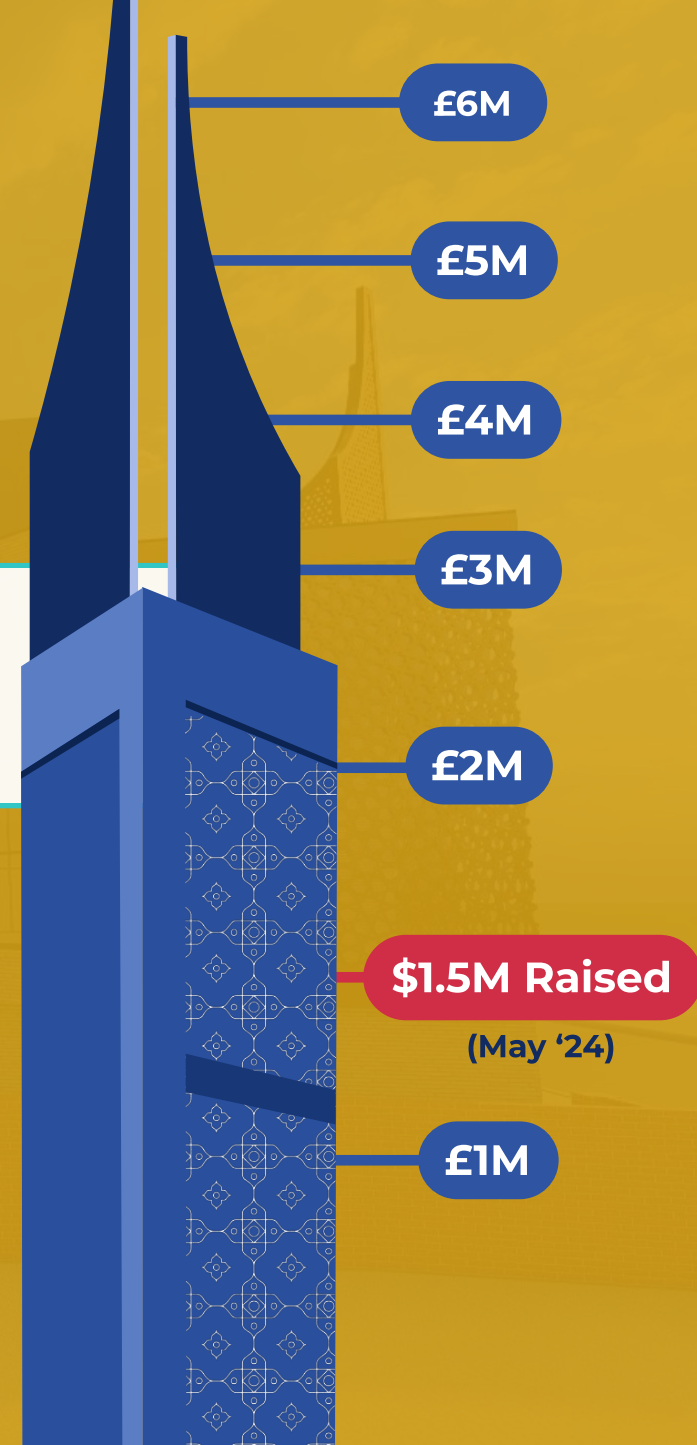
And hasten to forgiveness from your Lord and a garden [i.e., Paradise] as wide as the heavens and earth, prepared for the righteous; Who spend [in the cause of Allāh] during ease and hardship and who restrain anger and who pardon the people - and Allāh loves the doers of good; **Quran [3:133-134]**

By early 2025, the key project challenge will be to embark on Phase 3, which involves constructing a fully watertight structure for the new building. This critical phase is targeted for completion by the end of 2025, InshaAllah.

Estimate cost for phase 3 is expected to reach £1.5M

Reaching the total fundraising target of £7.5M will enable us to progress through the final phases with aim for project completion, insha'Allah.

We need your urgent support to raise funds in support of this.



Attaining the Pleasure of Allah (SWT) by striving in His cause.

Our health and wealth accompany us only in this temporary world, but what we build in the way of Allah SWT, shall become our enduring legacy. Building the House of Allah is a wonderful form of Sadaqah Jariyah (continuing charity) which will benefit long after we have passed. Insha'Allah.

May our efforts in His cause be a source of perpetual reward and blessings.

**Who is he that will lend to Allah a goodly loan so
that he may multiply it to him many times?
And it is Allah that decreases or increases (your
provisions), and unto Him shall you return
(Al-Baqara, Chapter #2, Verse #246)**

HOW CAN YOU SUPPORT THIS NOBLE CAUSE?

WAYS TO DONATE

ONLINE

Website: www.ianl.org.uk

MONTHLY GIVING

Setup via our website

PHONE OR EMAIL

Donate@ianl.org.uk

BANK TRANSFER OR DEPOSIT

Account Name: Islamic Association
of North London

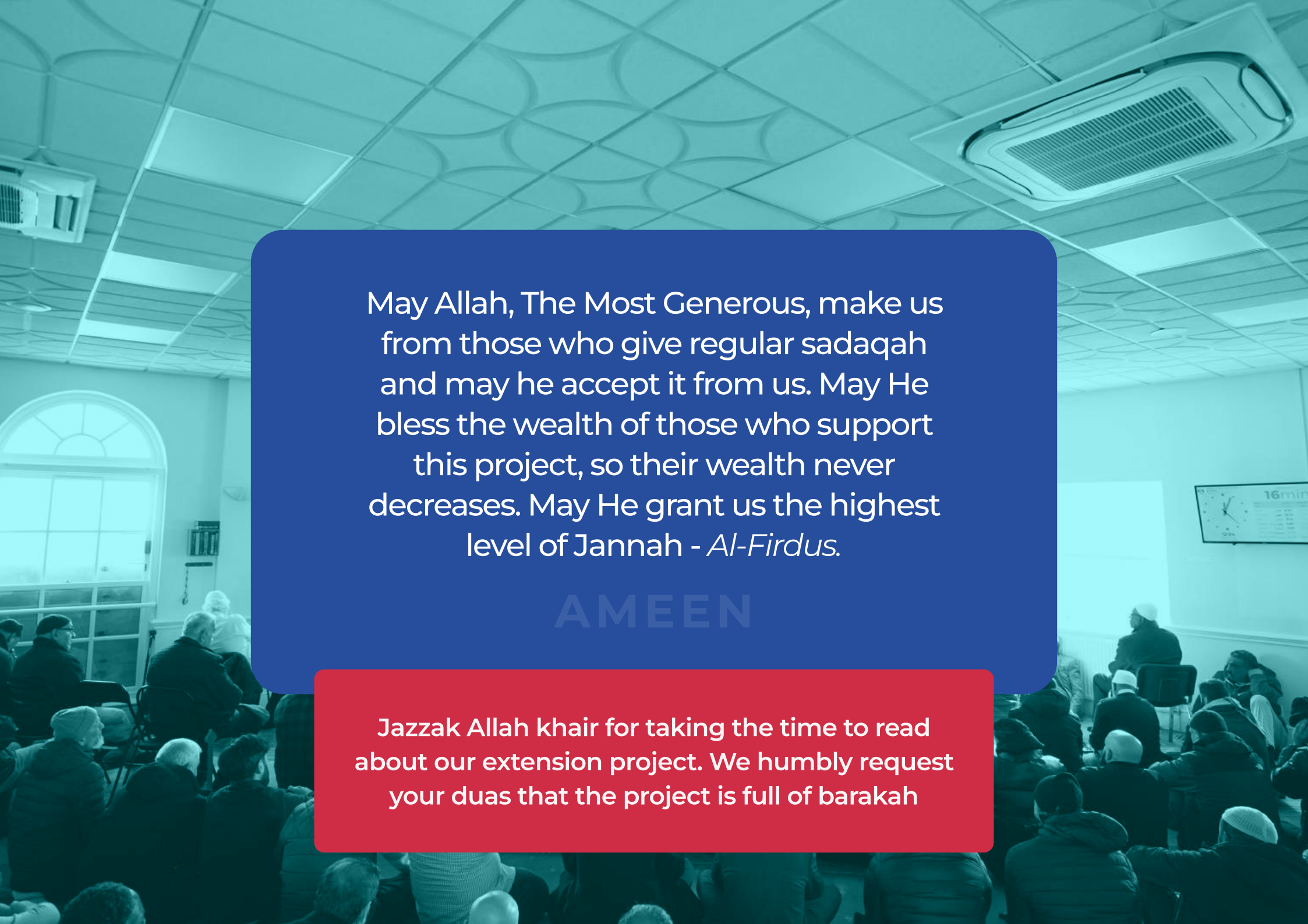
Account Number: 01408238

Sort Code: 30-00-83

Ref: (IANL_Ext_Name)

CORPORATE SPONSORSHIP

Contact Us for sponsorship opportunities.



May Allah, The Most Generous, make us from those who give regular sadaqah and may he accept it from us. May He bless the wealth of those who support this project, so their wealth never decreases. May He grant us the highest level of Jannah - *Al-Firdus*.

AMEEN

Jazzak Allah khair for taking the time to read about our extension project. We humbly request your duas that the project is full of barakah